

Installation Guide QwikFix Threaded Inserts

This installation instruction is for all Threaded Inserts as listed in the table below. For the design of Threaded Inserts please refer to the Ancon Threaded Insert Design Guide available on www.ancon.com.au.

Table 1 – Ancon QwikFix (Product Code FER)

Thread	Length (mm)	
	76	96
M12		FER1296Z FER1296G
M16	FER1676Z	FER1696Z FER1696G
M20	FER2076Z	FER2096Z FER2096G
UC16		FERB3496Z

Product finishes:

Z / ZH: Zinc Plated G: Hot-dip galvanized

QwikFix



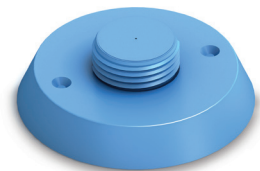
1A Installation of QwikFix Threaded inserts with Nailing Plate

For Threaded Inserts that are installed to the edge or bottom of timber formwork it is recommended to use Ancon NP nailing plates to attach the Threaded Insert to the formwork.

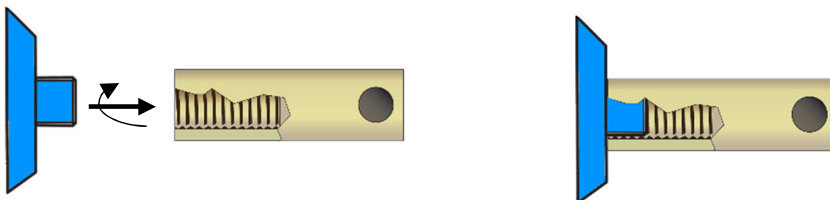
Table 2 – Ancon Nailing Plates (Product Code NP)

Thread	M10	M12	M16	M20	M24	3/4" Unicoil
Product Code	NP10U	NP12U	NP16U	NP20U	NP24U	NPB134
Colour	Purple	Red	Green	Blue	Yellow	Red

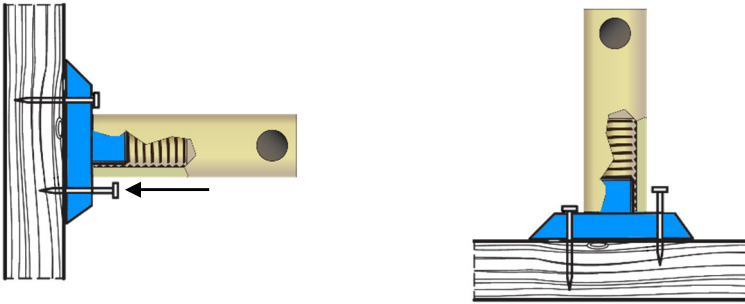
Nailing Plate




1. Attach the Nailing plate to the Threaded Insert



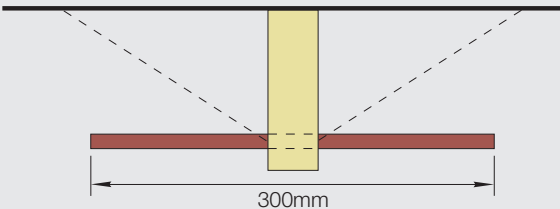
2. Nail the Threaded Insert to the formwork



3. Install reinforcement bars as required



Ancon QwikFix Threaded Inserts require the installation of a 300mm long N12 cross bar to transfer the induced tension load into the concrete.

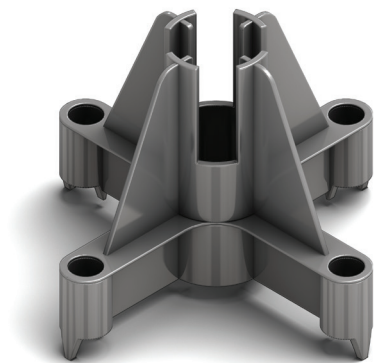


1B Installation of QwikFix Threaded inserts with Ancon Super Chair and Antenna cap

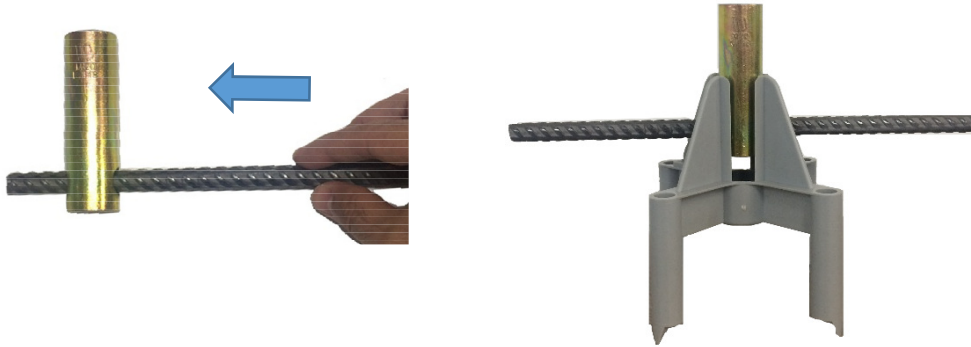
1. Choose the right Super Chair for the application based on slab thickness and QwikFix Threaded Insert as per table 3 below. Super Chairs allow for two different panel thicknesses by simply rotating the chair 90 degrees. Super chair can be used with 96mm long QwikFix threaded inserts only.

Table 3 – Ancon Precast Chair (Product Code PC)

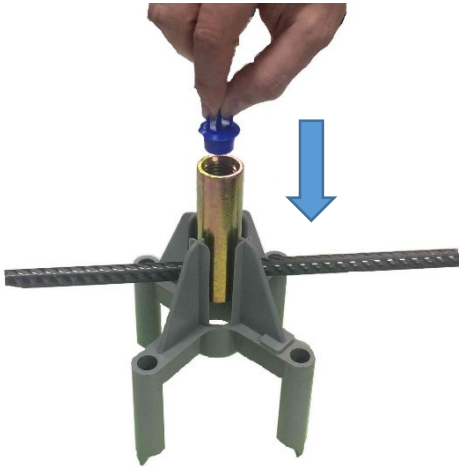
Slab thickness (mm)	Product code PC Precast Chair for use with 96-mm QwikFoot
125	SC125150
150	SC125150/SC150175
175	SC150175/SC175200
200	SC175200



2. Insert a 300mm long N12 bar through the cross hole and then put the QwikFix with bar into the Super Chair. Two different panel thicknesses can be achieved by rotating the chair 90 degrees.



3. Attach the Antenna cap to the top of the QwikFix Threaded Insert.



4. Place QwikFix Threaded Insert at the specified location and fix the cross-bar to the reinforcement to avoid displacement of the Insert during concrete pour.

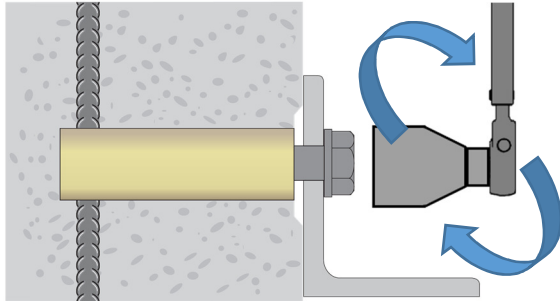
2 Concrete Placement



Special care is required during the compaction of the concrete around the threaded insert to avoid honeycombing and voids around the foot of the Threaded Insert.

3A Bolt installation for metric Threaded Inserts

Ancon QwikFix Threaded Inserts are designed to exceed the tensile and shear capacity of a grade 4.6 bolt. Leviat recommends to use the Threaded inserts with bolts of this grade. If bolts of a higher grade are installed, the torque must be limited to the installation torque of a grade 4.6 bolt to avoid possible damage to the Threaded Insert and surrounding concrete.



Install the bolt using a calibrated torque wrench with the torque limited to the value shown in the table below.

Table 4 – Installation torques for metric bolts with Ancon QwikFoot and QwikFix Threaded Inserts

Bolt Size	Installation Torque (Nm)
M10	18
M12	31
M16	75
M20	150
M24	250



Electric and air operated Impact Wrenches (so called rattle guns) apply uncontrolled torque to the bolt which can cause damage to bolt, Threaded Insert and supporting concrete.

Leviat recommends the use of torque-limited wrenches for the installation of bolts in Threaded Inserts.

Threaded Inserts require a minimum thread engagement of 1.5 times the thread diameter.

3B Installation of Unicoil bolts in Unicoil Threaded Inserts for temporary support according to AS 3850

The bolt should be installed using a calibrated torque wrench with the torque limited to the value shown in the table below.

Installation torque for Unicoil bolts used with Ancon QwikFoot and QwikFix Threaded Inserts:

Bolt Size	Installation Torque (Nm)
³ / ₄ " Unicoil Bolt	100

© Leviat, 2020

The Construction applications and details provided in this guide are indicative only. In every case installation should be entrusted to appropriately qualified and experienced persons. Normal handling precautions should be taken to avoid physical injury. Leviat cannot be held responsible for any injury as a result of using our products, unless such injury arises as a result of our negligence.